

Succulent and
SIMPLE



Scotch Beef fillet

It's SIMPLE

RARE



**Seared outside
75% red centre
2½ mins each side**

MEDIUM/RARE



**Seared outside
50% red centre
3-4 mins each side**

MEDIUM



**Seared outside
25% pink centre
4 mins each side**

MEDIUM/WELL



**Slight hint of pink
5 mins each side**

WELL DONE



**100% brown throughout
6 mins each side**

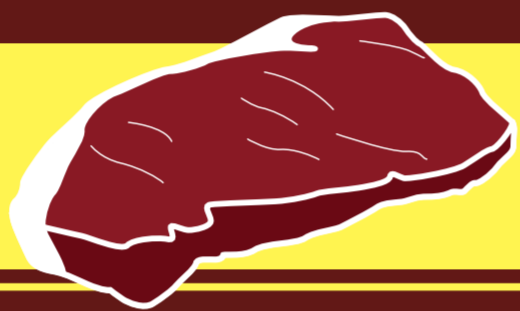


Try a succulent steak!

Succulent and

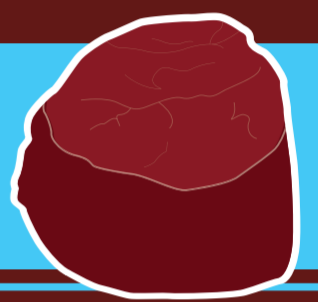
SIMPLE

Sirloin



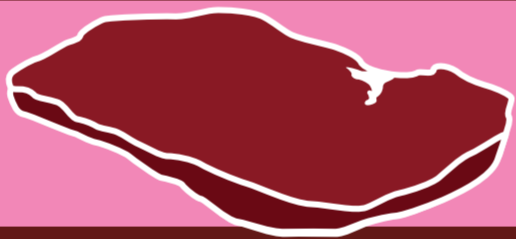
Tasty and tender, a classic served with chunky chips.

Fillet



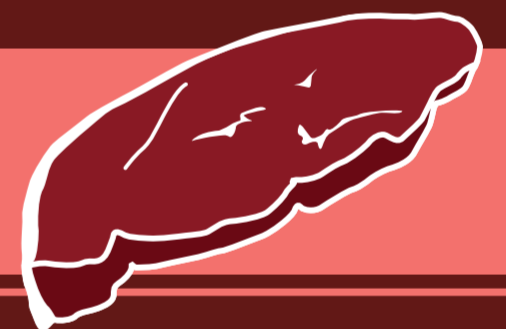
Lean and tender, meltingly soft to taste.

Minute



Quick, versatile and very tasty – the original fast food.

Rump



Full of flavour, marinate and grill for perfect results.

Ribeye



The chef's favourite, well marbled, tender and flavoursome



Try a succulent steak!